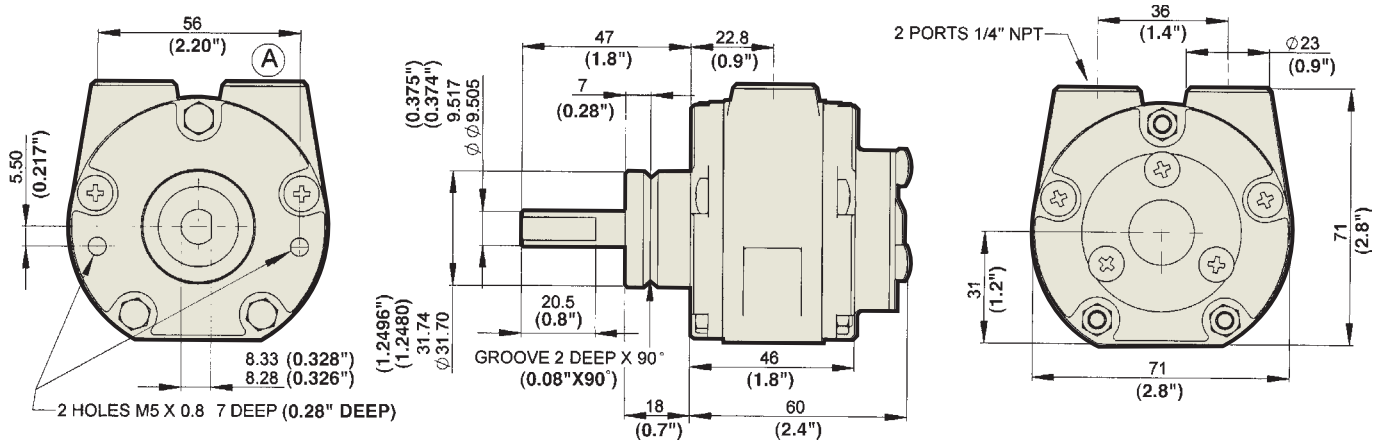


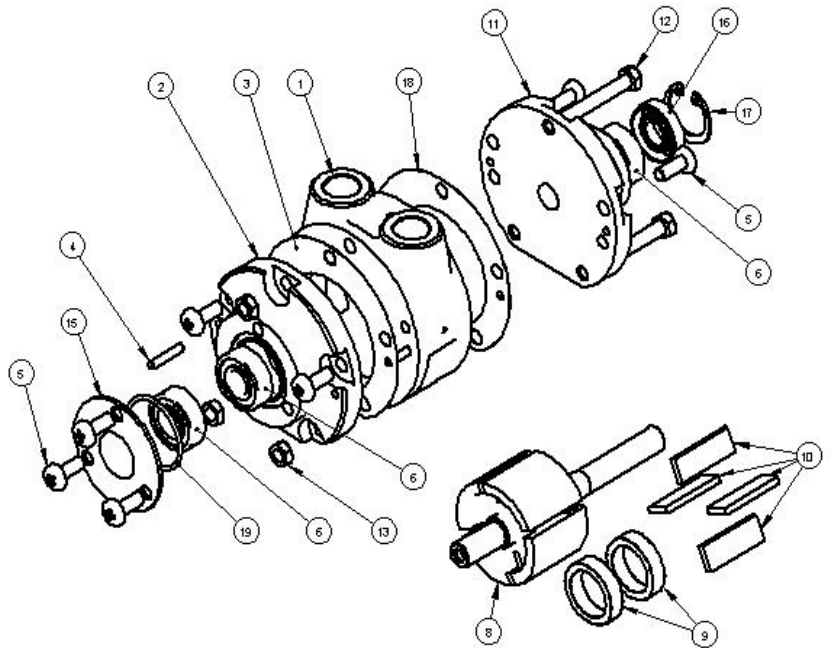
## DIMENSIONS V1



NOTE: WITH INLET AT PORT (A), SHAFT ROTATION IS CLOCKWISE LOOKING ON SHAFT. FOR OPPOSITE ROTATION REVERSE PORTS.

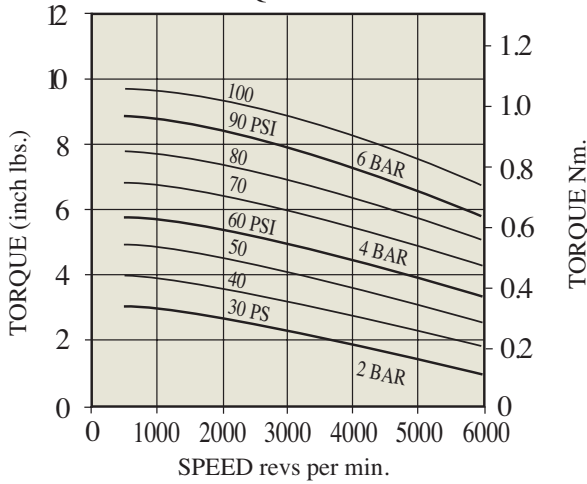
## EXPLODED VIEW WITH SPARE PARTS LIST

Item	Part No.	Description	Qty,	Kit No.
01	710-001	Body NPT	1	
02	710-002	Rear Cover	1	
03		Gasket	1	719-910
04	806-009	Dowel Pin	4	
05	805-050	Screw	7	
06	807-053	Bearing	3	
08	710-911	Rotor Shaft	1	
09	710-006	Ejection Ring	2	
10		Blade	4	719-910
11	710-003	Front Cover	1	
12	802-700	Bolt M5 x 40	3	
13	801-700	Nut M5	3	
15	710-008	End Plate	1	
16		Shaft Seal	1	719-910
17		Circlip	1	719-910
18		Gasket	1	719-910
19		O-ring	1	719-910

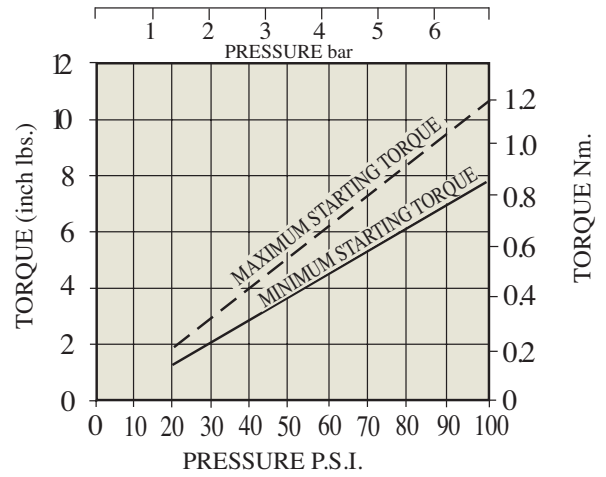


**PERFORMANCE V1 | 0 - 0.6 HP/0.44 KW REVERSIBLE**

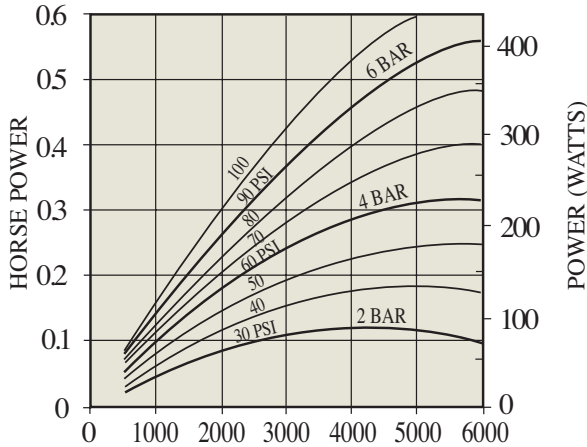
**GRAPH 1 TORQUE - SPEED**



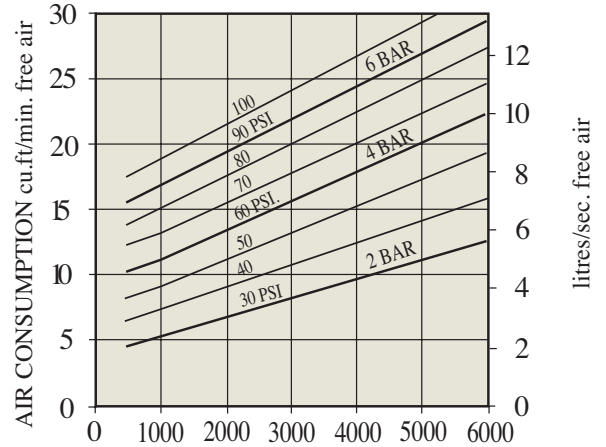
**GRAPH 2 STARTING TORQUE - PRESSURE**



**GRAPH 3 POWER - SPEED**



**GRAPH 4 CONSUMPTION - SPEED**



**ATTITUDE:**

The motor can be operated in all orientations.

**AIRLINE FILTRATION AND LUBRICATION:**

Use 64 micron filtration or better. Choose a lubricator suitable for the flow required. Prior to start up, inject oil into the inlet port.

**LUBRICATOR DROP RATE:**

4-5 drops per minute continuous operation.

9-12 drops per minute intermittent operation.

**POLAR MOMENT OF INERTIA:**

0.16 lb.ins<sup>2</sup> (460 g.cm<sup>2</sup>).

**MAXIMUM OVERHUNG FORCE ON SHAFT:**

4 lbf (18N) Axial loads should be kept to a minimum.

Consult your GLOBE Distributor.

**MAXIMUM TEMPERATURES:**

-4° to +176° Fahrenheit. (-20° to +80°C )

Muffler supplied with motor.