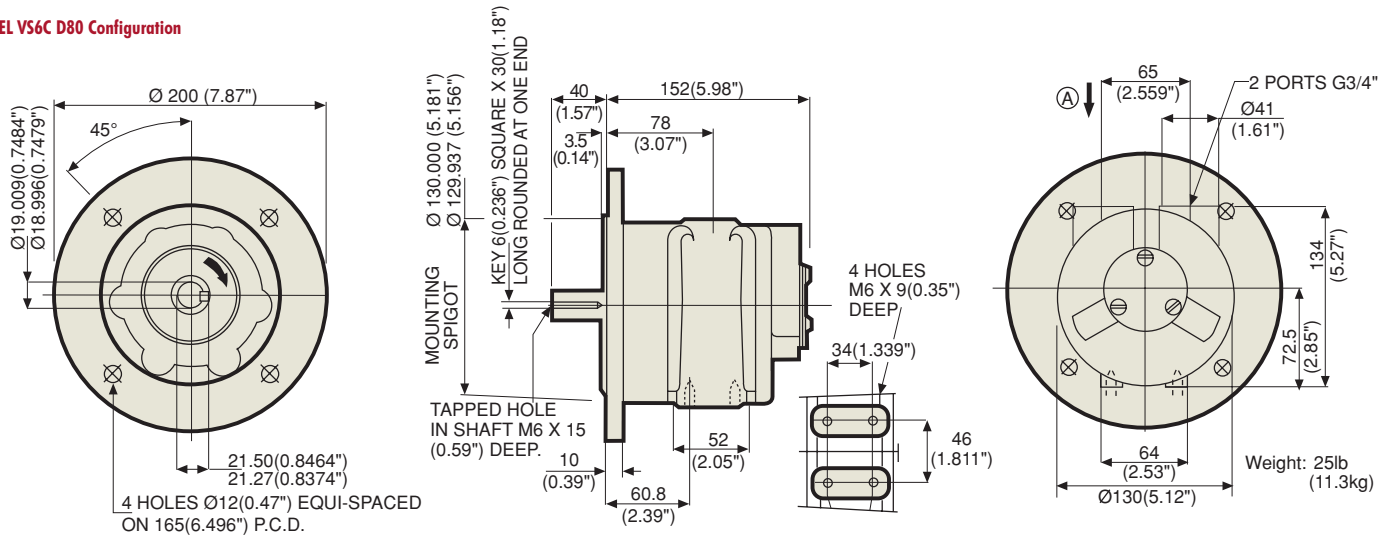


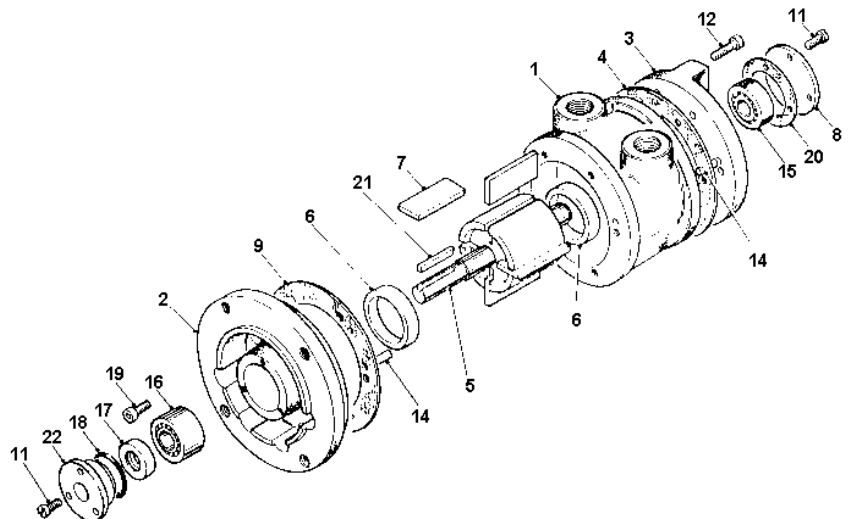
DIMENSIONS V6

MODEL VS6C D80 Configuration

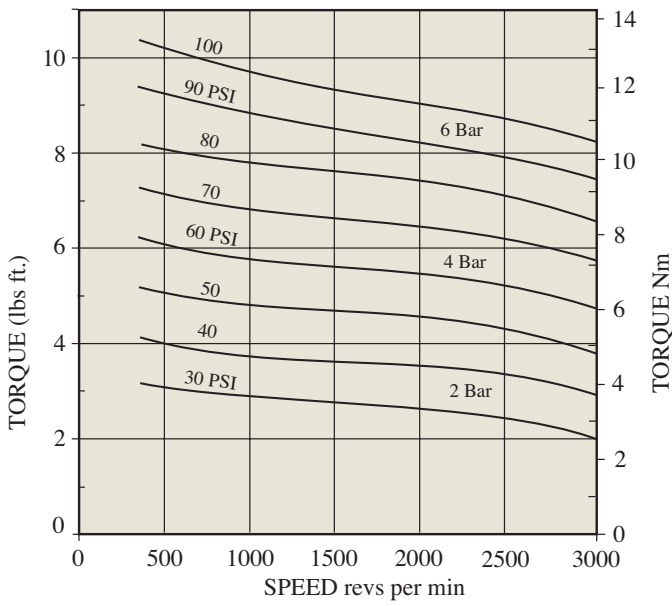


EXPLODED VIEW WITH SPARE PARTS LIST

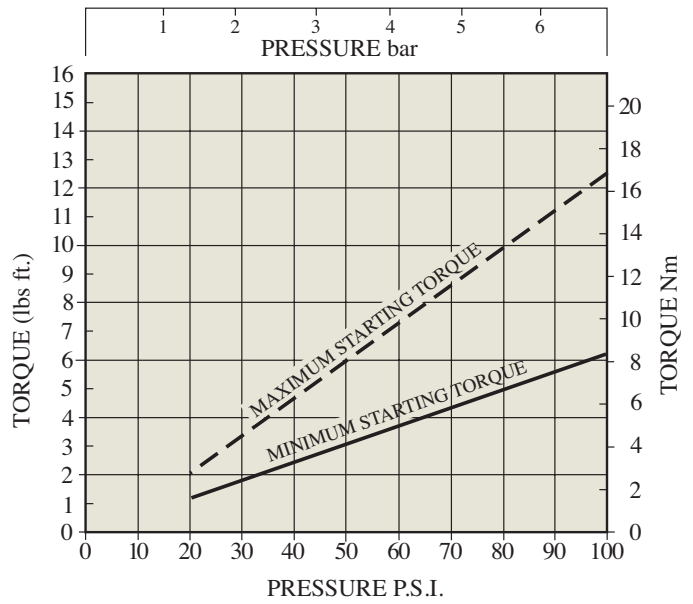
Item	Part No.	Description	Qty	Kit No.
01	760-101	Body	1	
02	760-036	Front Plate D80	1	
03	760-002	End Plate	1	
04	-	Gasket	2	769-910
05	760-921	Rotor Shaft Assy	1	
06	760-006	Ejection Ring	2	
07	-	Blades	4	769-910
08	760-008	Cover Plate	1	
09-1	-	Gasket	1	769-910
09-2	-	Gasket	1	769-910
09-3	-	Gasket	1	769-910
11	805-006	Screw	6	
12	809-009	Cap Screw	6	
14	806-024	Dowel	4	
15	807-025	Bearing	1	
16	807-026	Bearing	1	
17	-	Oil Seal	1	769-910
18	-	O Ring	1	769-910
19	809-007	Capscrew	6	
20	-	Gasket	1	769-910
21	811-001	Key	1	
22	780-007	Seal Housing	1	
	769-910	V6 Seal Kit		
	820-005	Silencer 3/4 BSP	1	



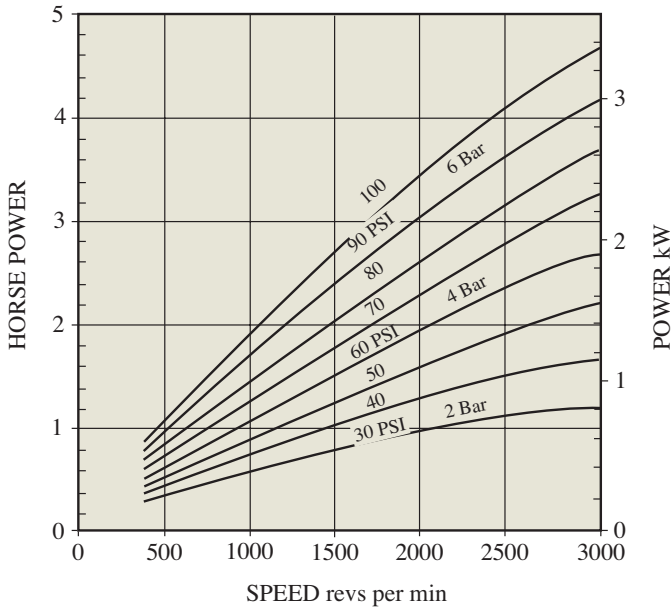
GRAPH 1 TORQUE - SPEED



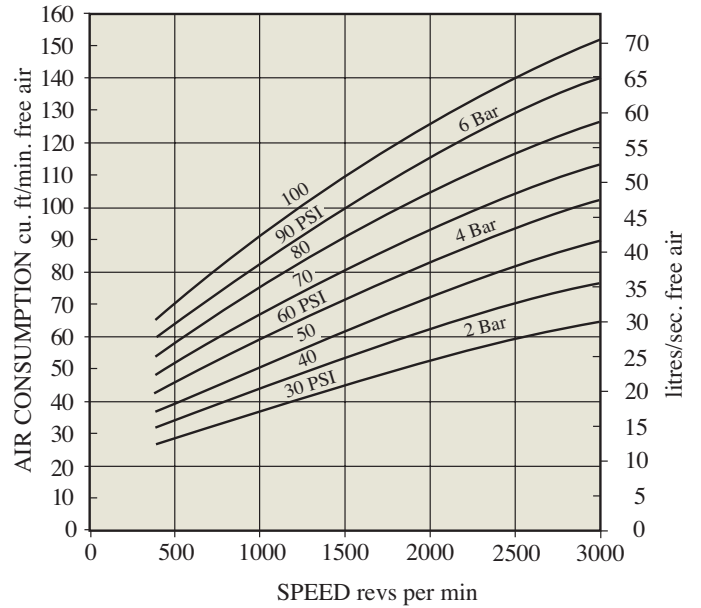
GRAPH 2 STARTING TORQUE - PRESSURE



GRAPH 3 POWER - SPEED



GRAPH 4 CONSUMPTION - SPEED



ATTITUDE:

The motor can be operated in all orientations.

AIRLINE FILTRATION AND LUBRICATION:

Use 64 micron filtration or better. Choose a lubricator suitable for the flow required. Prior to start up, inject oil into the inlet port.

LUBRICATOR DROP RATE:

5-6 drops per minute continuous operation.
10-12 drops per minute intermittent operation.

POLAR MOMENT OF INERTIA:

1.56 lb.ins² (0.45 g.m²).

MAXIMUM OVERHUNG FORCE ON SHAFT:

70 lbf (300N) In certain circumstances this may be extended. Consult your GLOBE Distributor. Axial loads should be kept down to a minimum.

MAXIMUM TEMPERATURES:

-40° to +176° Fahrenheit. (-20° to +80°C)